



<b>Engine</b>	Cummins QSB4.5
<b>Rated Power</b>	97 kW (130 hp / 132 ps) @ 2,200 rpm
<b>Net Power</b>	89.5 kW (120 hp / 122 ps) @ 2,200 rpm
<b>Maximum Digging Depth</b>	4,912 mm
<b>Standard Bucket Capacity</b>	0.58 m <sup>3</sup>
<b>Operating Weight</b>	15,600 kg

# **W915E**

## **EXCAVATOR**

# W915E SPECIFICATIONS >>>

## ENGINE

Emission Regulation	Stage III
Manufacturer	Cummins
Model	QSB 4.5
Rated Power	97 kW (130 hp / 132 ps) @ 2,200 rpm
Net Power	89.5 kW (120 hp / 122 ps) @ 2,200 rpm
Peak Torque	620 N·m @ 1,500 rpm
Number of Cylinders	4
Displacement	4.5 L

## UNDERCARRIAGE

Travel Speed (Max./Min.)	30/7.6 km/h
Drawbar Pull	90 kN
Turn Angle	35°
Turning Radius	7,000 mm
Tire Size	10.00-20

## HYDRAULIC SYSTEM

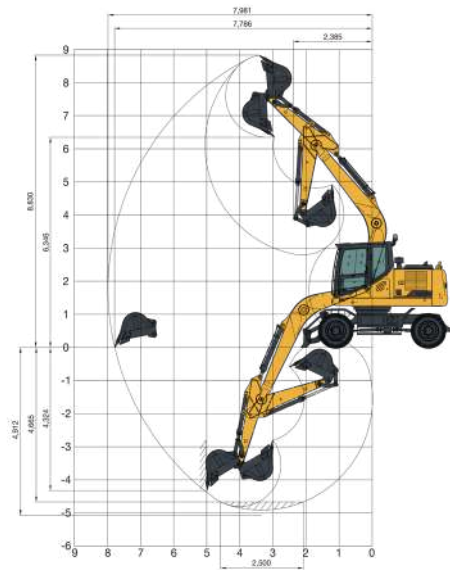
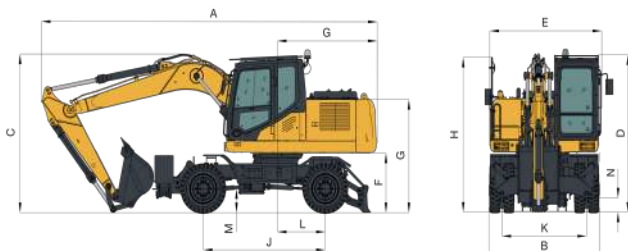
Main Pumps Total Flow	2 × 175 L/min
Relief Pressure, main	34.3 MPa
Relief Pressure, boost	37.3 MPa

## SWING SYSTEM

Swing Speed	11 rpm
-------------	--------

## DIMENSIONS

A. Shipping Length	7,710 mm
B. Shipping Width	2,540 mm
C. Shipping Height	3,305 mm
D. Overall Height of Cab	3,200 mm
E. Overall Width of Upper Structure	2,516 mm
F. Counterweight Ground Clearance	1,240 mm
G. Tail Swing Radius	2,290 mm
H. Undercarriage Length	4,775 mm
I. Undercarriage Width	2,540 mm
J. Wheel Base	2,800 mm
K. Wheel Track	1,944 mm



## REFERENCE ARM

Arm Length	2,100 mm
Arm Digging Force (ISO)	73.9 kN

## WORKING RANGES

Max. Digging Depth	4,912 mm
Max. Digging Reach	7,981 mm
Max. Digging Reach on Ground	7,786 mm
Max. Digging Depth, 2.5m(8') Level	4,665 mm
Max. Digging Height	8,830 mm
Max. Dumping Height	6,346 mm
Max. Vertical Wall Digging Depth	4,324 mm

## BUCKET PERFORMANCE

Standard Bucket Heaped Capacity (Referenced)	0.58 m <sup>3</sup>
Minimum Heaped Capacity of Bucket Options	0.36 m <sup>3</sup>
Maximum Heaped Capacity of Bucket Options	0.58 m <sup>3</sup>
Bucket Digging Force (ISO)	92.8 kN

## SERVICE CAPACITIES

Fuel Tank	260 L
Engine Oil	16 L
Cooling System	21 L
Hydraulic Reservoir	120 L
Hydraulic System Total	200 L

## DRIVE

Gradeability	35°
--------------	-----

Guangxi Liugong Machinery Co., Ltd.

No. 1 Liutai Road, Liuzhou, Guangxi 545007, PR China  
T: +86 772 3886124 E: overseas@liugong.com  
www.liugong.com

Specifications and designs are subject to change without notice. Machines shown may include optional equipment. Liugong standard and optional equipment may vary from region to region. Please consult your Liugong dealer for information specific to your area. Engine power kW is converted to horsepower (1 kW=1.3596 ps and 1 kW=1.3410 hp) in this file.

07/2023 Designed by LiuGong  
Replace the previous versions of 11/2022