



Engine Cummins QSL
Rated Power 214 kW (287 hp / 291 ps) @ 2,100 rpm
Operating Weight 50,000 kg

952E MH EXCAVATOR

952E^{MH} SPECIFICATIONS >>>

ENGINE

Emission Regulation	Stage IIIA
Manufacturer	Cummins
Model	QSL
Rated Power	214 kW (287 hp / 291 ps) @ 2,100 rpm
Net Power	202 kW (271 hp / 275 ps) @ 2,100 rpm
Peak Torque	1,343 N·m @ 1,300 rpm
Number of Cylinders	6
Displacement	8.9 L

UNDERCARRIAGE

Shoe Width	600 mm
Number of Shoes per Side	52
Number of Upper Rollers per Side	2
Number of Bottom Rollers per Side	9

BOOM & ARM

Boom Length	9,600 mm
Arm Length	7,500 mm

TRACK DRIVE

Maximum Travel Speed	6.2 km/h
Drawbar Pull	300 kN

SERVICE CAPACITIES

Fuel Tank	620 L
Engine Oil	36 L
Cooling System	37 L
Hydraulic Reservoir	240 L
Hydraulic System Total	450 L

HYDRAULIC SYSTEM

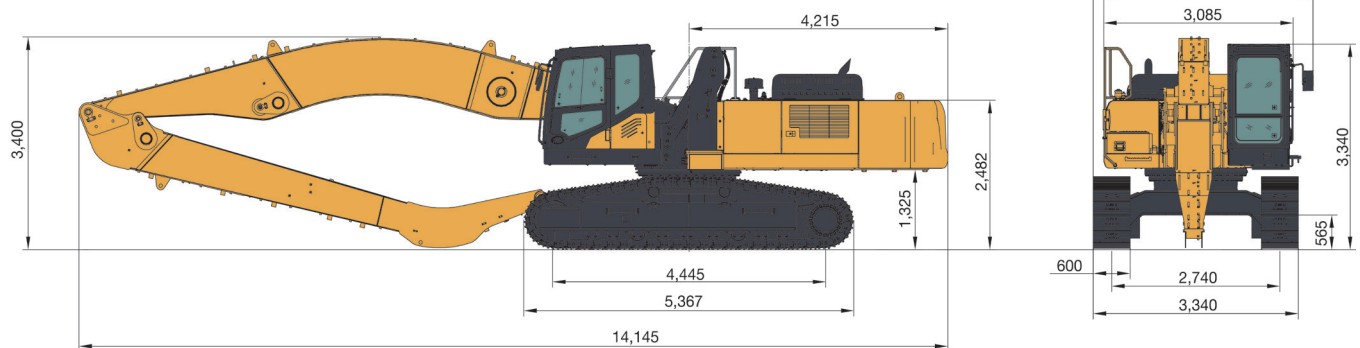
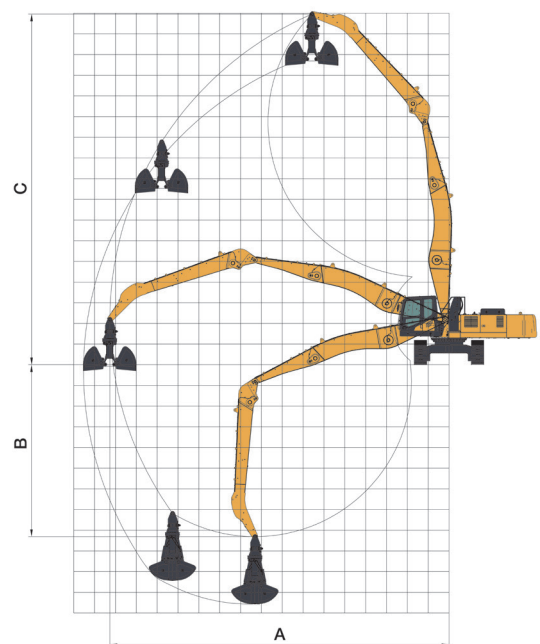
Main Pumps Total Flow	2×325 L/min
Relief Pressure, main	34.3 MPa
Relief Pressure, boost	37.3 MPa

SWING SYSTEM

Swing Speed	10.1 rpm
-------------	----------

WORK RANGE

A. Max. Working Radius	16,266 mm
B. Max. Working Depth	8,305 mm
C. Max. Working Height	16,951 mm



Guangxi Liugong Machinery Co., Ltd.

No. 1 Liutai Road, Liuzhou, Guangxi 545007, PR China
T: +86 772 3886124 E: overseas@liugong.com
www.liugong.com

06/2022 Designed by LiuGong

Specifications and designs are subject to change without notice. Machines shown may include optional equipment. LiuGong standard and optional equipment may vary from region to region. Please consult your LiuGong dealer for information specific to your area. Engine power kW is converted to metric hp in this file (1 kW=1.3596 hp).